



PIONEER INDUSTRIES, INC.
 3325 S. Garfield Ave.
 Commerce, CA 90040
 (800) 338-9468
 www.pioneerind.com

INSTALLATION

Tools:



Adjustable Wrench



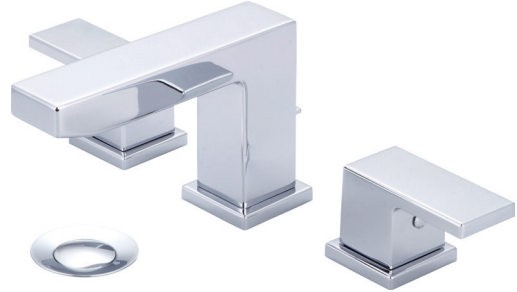
Plumbers Putty



Teflon Tape



Rags



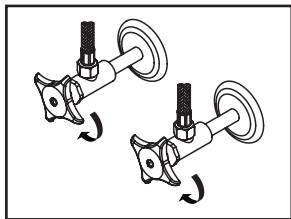
Model Number: 3MO200

Warnings and Notes:

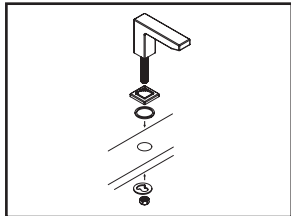
Check with local plumbing code requirements before installation.
 This product should be installed by a local listed plumber.
Do not use plumbers putty on threads.

Installation Steps:

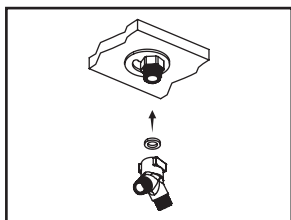
Two Handle Lavatory Widespread Faucet



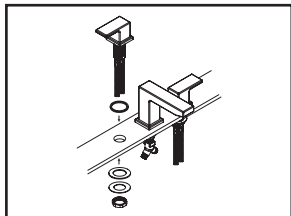
(1) Shut off water supplies. Remove old faucet. Clean mounting surface in preparation for new faucet.



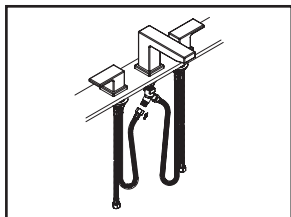
(2) Place spout flange under the spout. Ensure there is a washer under the spout flange. Place the spout in position on the sink. From under the sink slide mounting bracket through spout shank. Thread nut onto spout shank properly and tighten nut.



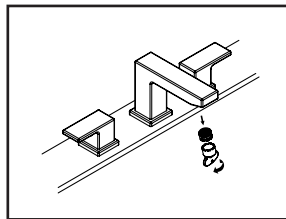
(3) Thread Y connector to the spout shank. Ensure there is a washer in the Y connector. Do not overtighten.



(4) Place hot and cold side valve in position on the sink. From under the sink place washers and thread locknut with the help of 1-11/32" size socket.

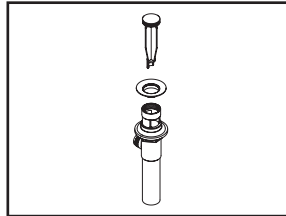


(5) Connect both hot and cold side valve outlet hose to Y connector.

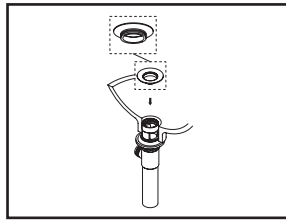


(6) Install the inlet hoses to the main supply stops. Turn on supply stops. Check for any leaks. Make sure all the connections are secure. Remove aerator. Turn on both hot and cold water and let water run at least one minute. Then turn off water and replace aerator.

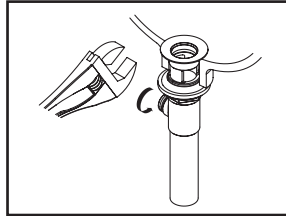
Pop-up Drain Installation:



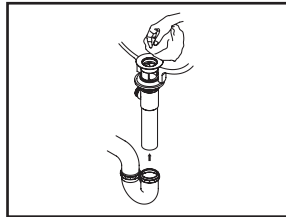
(1) Remove pop-up flange from body



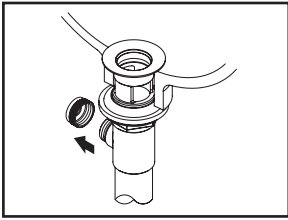
(2) Place a ring of plumbers putty on the bottom of flange.



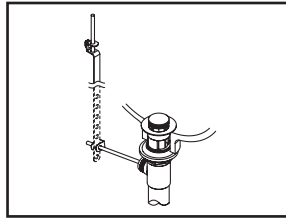
(3) Insert pop-up flange through drain hole and attach flange to body. Use Teflon tape to thread tail piece to Pop-up drain body. Ensure the pop-up outlet faces towards the back of the sink. Tighten the locknut securely with a wrench. Do not overtighten.



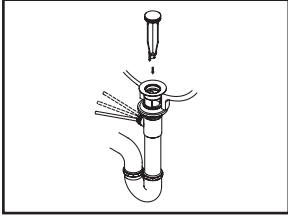
(4) Remove the excess plumbers putty. Connect the trap (check manufacturer's instructions for installation).



(5) Remove pivot rod nut from pop-up body, ensure the washers is in place, insert pivot rod, tighten pivot rod nut back to pop-up body.



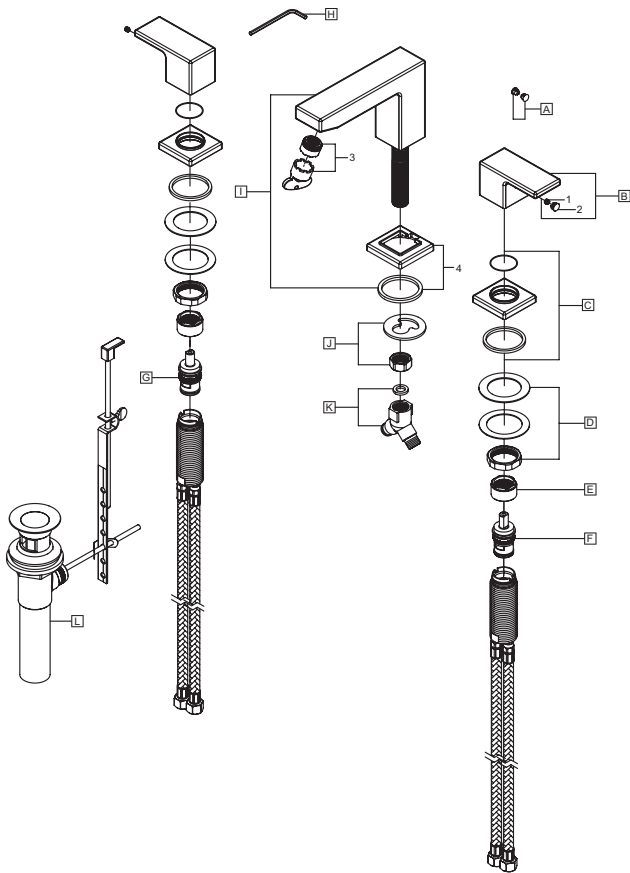
(7) Connect lift rod strap to pivot rod by using clip. Tighten the thumbscrew to connect lift rod strap to pop-up lift rod.



(6) Push pivot rod down, insert drain plug carefully. Test to ensure drain plug works properly.

Exploded Drawing :

* Note: Please specify finish/color when ordering.



	ITEM #	DESCRIPTION
A	X-4300093	Red/Blue Index Button
B	X-1300020*	Metal Lever Handle
C	X-4300094*	Valve Escutcheon
D	X-5900001	Valve Mounting Kit
E	X-4900022	Bonnet Nut
F	X-3900002C	Ceramic Disc Cartridge-Cold
G	X-3900002H	Ceramic Disc Cartridge-Hot
H	X-4900024	3/32" Allen Wrench
I	X-2300021*	Square Rigid Spout
J	X-5300003	Spout Mounting Kit
K	X-4300011	Y Connector
L	X-6300030*	Pop-up Drain Assembly
1	X-4900002	3/32" Allen Screw
2	X-4900044*	Hole Cover
3	OP-490062	1.2 GPM Aerator & Tool
4	X-4300091*	Spout Escutcheon



For more care information or trouble shooting inquiries about your Pioneer product, please call:
Pioneer Industries, Inc. (800) 338-9468
 Monday-Friday 8 AM to 8 PM EST (5 AM to 5 PM PST)
www.pioneerind.com